

# Zimbabwe Health Care System

Michael O. Ikeogu DMED,FRCA,DA,MRCP(PAEDS) DCH

Consultant Paediatrician

Department of Paediatrics

Mpilo Central Hospital

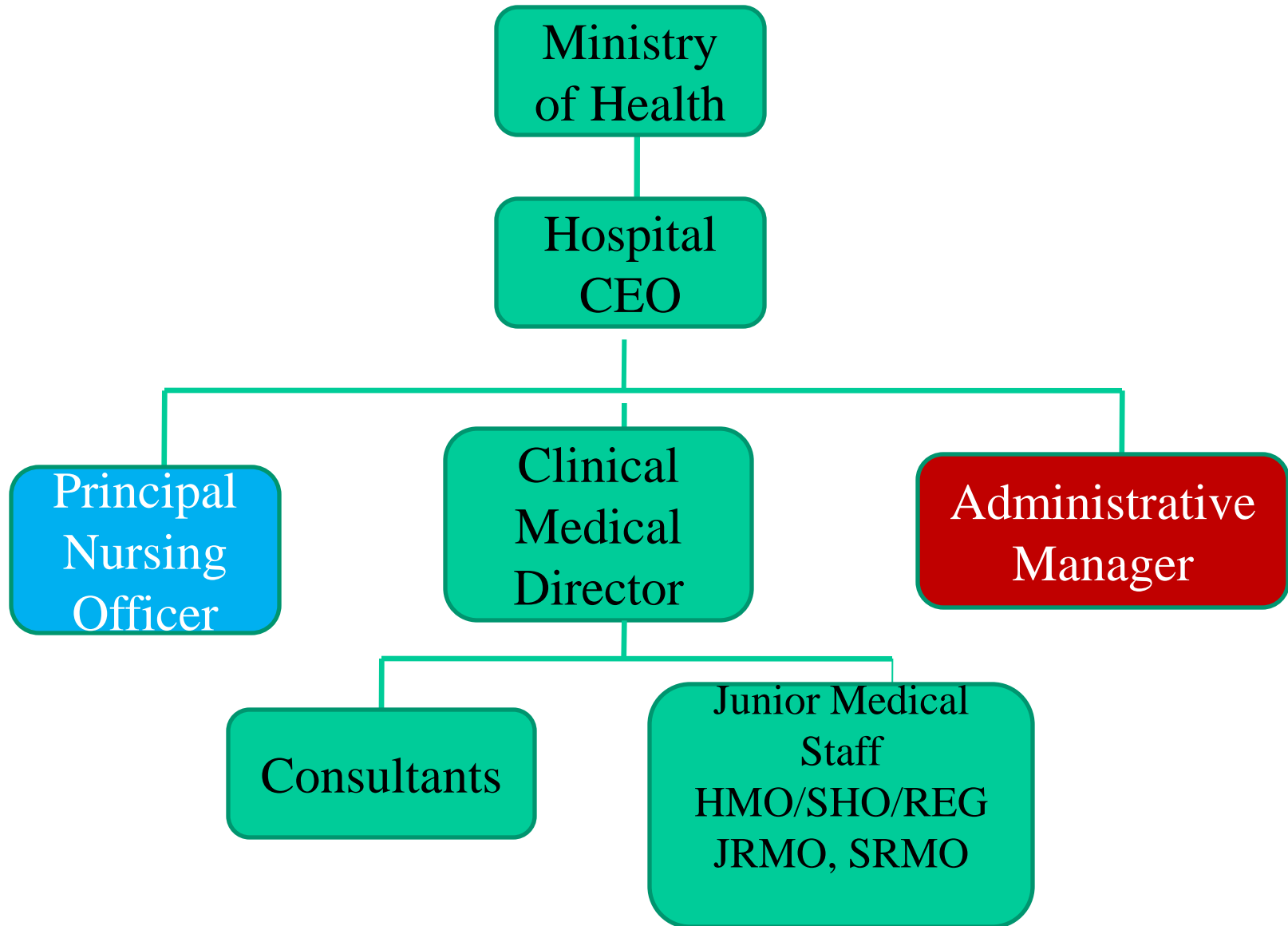
Bulawayo

ZIMBABWE

# Ministry of Health

Level of Care	Level of Administration	Institution
Quaternary Level	National	Central Hospitals Referral Centres for complex problems offer Specialist Care
Tertiary Level	Provincial	Provincial Hospital selected basic specialties, e.g. Surgery Gyne and Obs, general medicine
Secondary Level	District	District Hospital District Medical Officer with Registered General Nurses. Looks after 10 – 12 Clinics. Average Population 25,000
Primary Level	Village/Ward	Rural Health Centres/Clinics VHW/CHW – RGNs and Primary Care Nurses

# Central Hospital Structure



# Paediatric Cover of Major Cities In Zimbabwe

City	Population (MICC)	No. Of Paeds
HARARE	2.5	30 +
BULAWAYO	1.5	4
MUTARE		1
GWERU		0
ZIM POPULATION	2000 2010	12 MILLION 8 MILLION

# Current Paediatric Structure

	Consultant I	Consultant II	Consultant III
Years of Service	30	28	8
Activity	General Paed	General Paed	General Paed
	Nutrition	Cardiol + Echocard	Neonatal
	HIV Therapy	PICU NICU	HIV Therapy
Junior Staff	JRMO 3 - 5	SRMO 3 - 5	SRMO 3 - 5
	HMO (1)	HMO (1)	HMO (1)
Sub Special	0	0	0

# Special Procedures Carried Out by General Paediatricians

1.	Bone marrow aspirates
2.	Liver biopsy
3.	Lung biopsy
4.	Renal biopsy
5.	Lymph node biopsy
6.	Central venous catheterization
7.	Arterial canulation

# Training Requirements

1.	Production High Expertise Paeds to function at all levels of healthcare
2.	Teaching and supervision of junior doctors and staff
3.	Research methods
4.	Management/Leadership Role in Medicine
5.	Ethical Issues in Paediatrics
6.	Child Advocacy
7.	Future sub-specialist